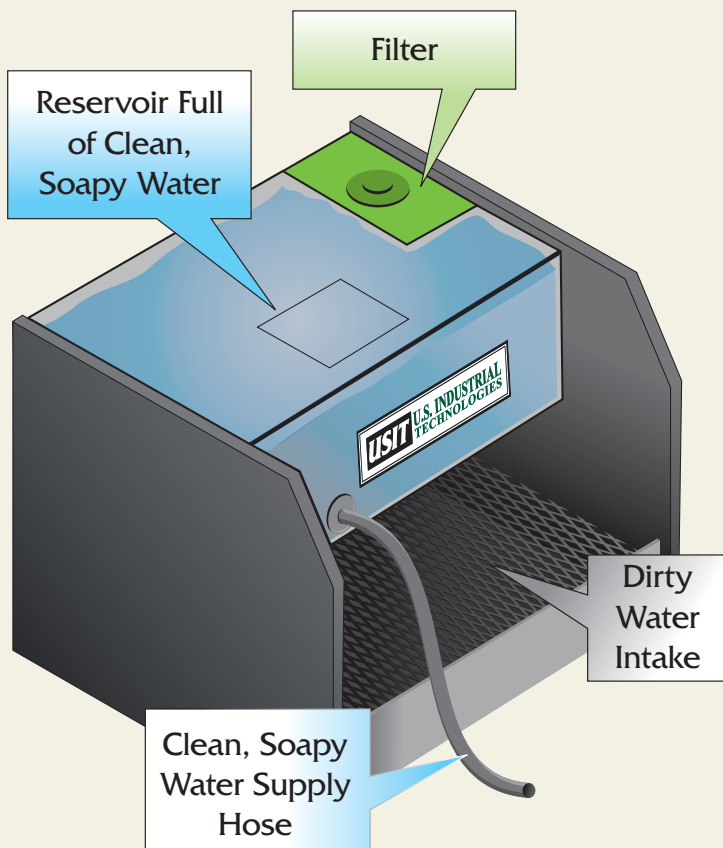


# MOP WATER RECYCLING UNIT™

Patent Pending

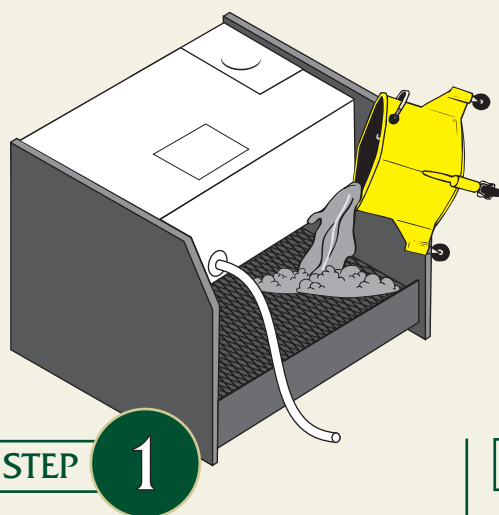
**USIT** U.S. INDUSTRIAL TECHNOLOGIES



## RE-USE YOUR DIRTY MOP WATER

- Why pay to transport and dispose of your dirty mop water when you can filter and re-use the water multiple times.
- USIT can provide companies with a fully automatic mop water recycle system that will filter out dirt and oils. Once filtered the cleaned soapy water can be re-used for floor scrubbing applications.
- This process eliminates transportation and disposal, as well as new water and new soap costs. Also avoids having to meet discharge permits and or limits.
- Dump Station: 48"x48"x48" Unit. Processes up to 2000 gallons per day.
- Some of the proven applications are; Machining Operations, Welding Operations, Stamping Operations, Assembly Operations and many more!

## HOW IT WORKS



STEP

1

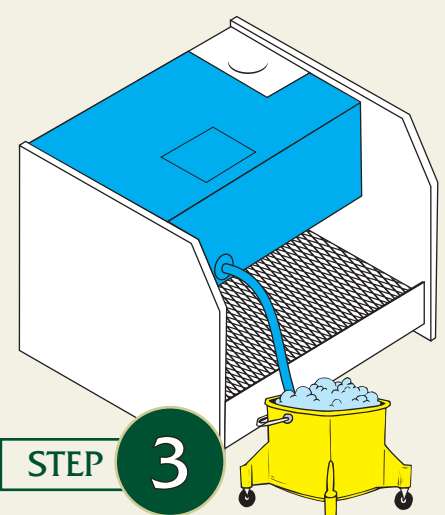
- Dirty mop water is dumped into the base of the unit.
- Large debris is removed from the dump grating.



STEP

2

- Dirty water is pumped through the filter, where dirt and oils are removed. The recycled soap and water is then stored in the reservoir.



STEP

3

- Recycled soapy water is then pumped back into mop buckets, floor scrubbers, etc. for reuse.